

DESIGN INTENTION

Utilising Casambi in your Energyline specification allows for easy installation and functionality, with minimal additional hardware and deployment costs.

CASAMBI WIRELESS

The Casambi solution is based on Bluetooth Low Energy, the only low power wireless technology used in all modern smartphones, tablets and smart watches. On top of Bluetooth Low Energy, the Casambi technology provides a mesh network where all the intelligence of the system is replicated in every node and, in such a way, creates a system with no single points of failure.

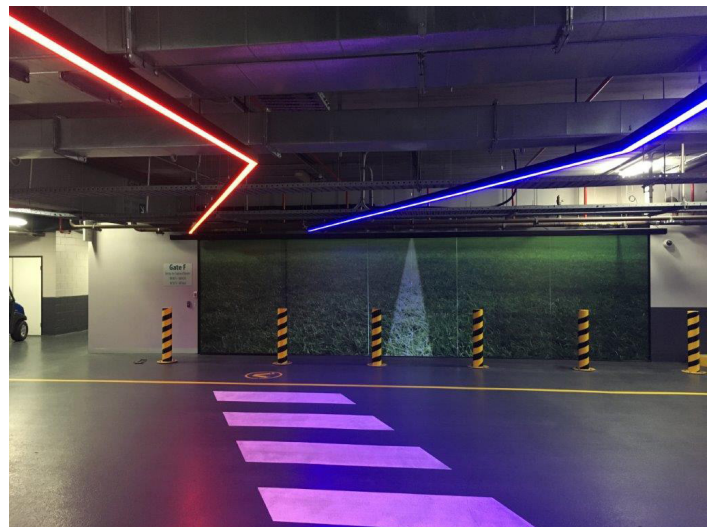
The Casambi app works as one of the user interfaces in a Casambi lighting control solution, as the commissioning tool and as a remote gateway. The Casambi app works with iOS as well as Android devices, like smartphones, tablets and smartwatches. The app is free to download by any end-user. Besides the app, traditional wall switches, push buttons, Casambi's own scene controllers and many other control points can be used.



Benefits apply in workspace and community (health/aged care) type applications at a room level or multi floor building level. For example, multi floor office fit outs, teaching spaces, common areas, smaller community or public buildings.

When using Casambi as the control method, benefits include:

- ✓ Reduced energy use through automation, operation by building occupants (scenes) and controlling light for wellness
- ✓ Reduced cost through reduced wiring, controllers, cabling, complexity, commissioning and installation labour.
- ✓ Without the need for cables, Casambi is flexible during commissioning or future fine tuning. Casambi networks can be created or changed simply within the app (unlike hardwired networks). Facility Managers or occupants can download their own app and have training on how to use it and tweak their own system (with the right permissions)



More information available from:
<https://casambi.com/>

