



# ENERGYLINE

DESIGN GUIDE | ANGLE MITRES

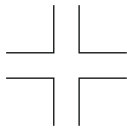
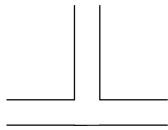
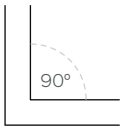
## DESIGN INTENTION

Energyline with angled mitres allows for customisation of the luminaire while maintaining the premium linear extrusion. Add design flair to your Energyline specification through use of junctions and intersections, whether it be a cross, wall intersection or angled mitre.

### DESIGNING IN ENERGYLINE 75, 55 OR 108

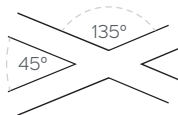
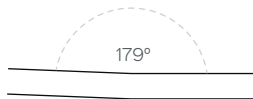
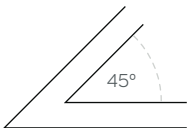
#### STANDARD ANGLES

90° standard angle  
90° standard for T shapes and crosses



#### CUSTOM ANGLES

45° - 179° available  
For angles < 45°, get in touch with your local Energyline sales partner to discuss requirements



#### MITRE DETAIL

Welded, dressed and powder coated  
Wall intersections are supplied in two sections, can accommodate complex details

#### CUSTOM COLOURS

Colour matched to the rest of your Energyline system

#### IP RATING

IP5x as standard

#### OTHER REQUIREMENTS

Remember to dangle your angle



Image 1: Example of 90° mitres in recessed Energyline



Image 2: Example of 'cross' mitres

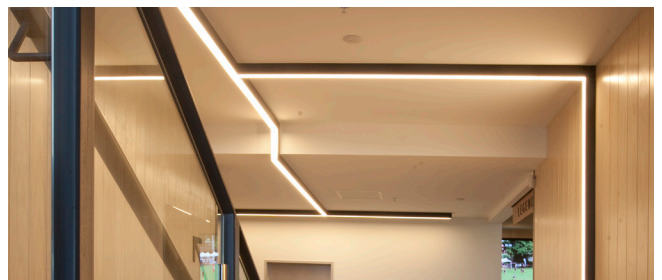


Image 3: Example vertical to horizontal mitres

# ENERGYLINE

customercare@energyline.net | +64 3 982 5284 | energyline.net